



# XC60





# WE'RE VOLVO. WE PUT PEOPLE FIRST.



HELLO

| 1

We're Swedish. Scandinavian designers always start with the person who's going to use an object and ask, "What can we do to make this person's life better, easier or more comfortable?" We've always used this philosophy when we design our cars. So, while other car manufacturers might start with technology and try to squeeze people in around it, we begin by designing our cars around you. We ask what you need, and then use our technical skills to make your life easier, better, safer and more beautiful. Form follows function, and when you design a car inside and out with people in mind, it looks naturally beautiful. We think that looking at and interacting with our cars should make you feel great, every day.


Designing cars around people has led to many innovations over our 86-year history. The three-point safety belt in your current car? That was our invention from 1959. We've solved a few environmental issues, too – in 1976, we developed the Lambda Sond – a sensor that monitors exhaust gas, reducing emissions and boosting performance as well as economy. It's still part of every petrol-engined car in the world.

Innovation is at the core of Volvo. Perhaps it's because of where we come from.



IN SWEDEN, GREAT DESIGN IS A  
WAY OF LIFE, NOT A LUXURY.



- 
- ◀ For such a small country, we've produced more than our share of creative talent. That's because we know that to be truly creative, you've got to believe in yourself and do things the way you know they should be done, regardless of what others are doing.

Take our seats. In the early 1960s, we consulted with a team of orthopaedic surgeons at Chalmers University of Technology here in Gothenburg. They wondered why a group of car designers wanted to see them. Nobody had thought to ask an orthopaedic surgeon's advice when designing a car seat before. But the ergonomic seat designs we developed as a result have made our cars world-famous for their outstanding long-distance comfort.

Like all Scandinavian craftsmen, we use only the best materials for the job, like the ultra-strong boron steel in our safety cages. We use natural, authentic materials inside our cars – not because they're fashionable this season, but because they make you feel good when you touch them and they're better for your health.

Creating a beautiful experience for you is natural for us. Because in Sweden, great design is a way of life, not a luxury.

# THE XC60. MEET THE SUV THAT'S GREAT TO DRIVE.

YOUR NEW CAR

VOLVO XC60 | 4

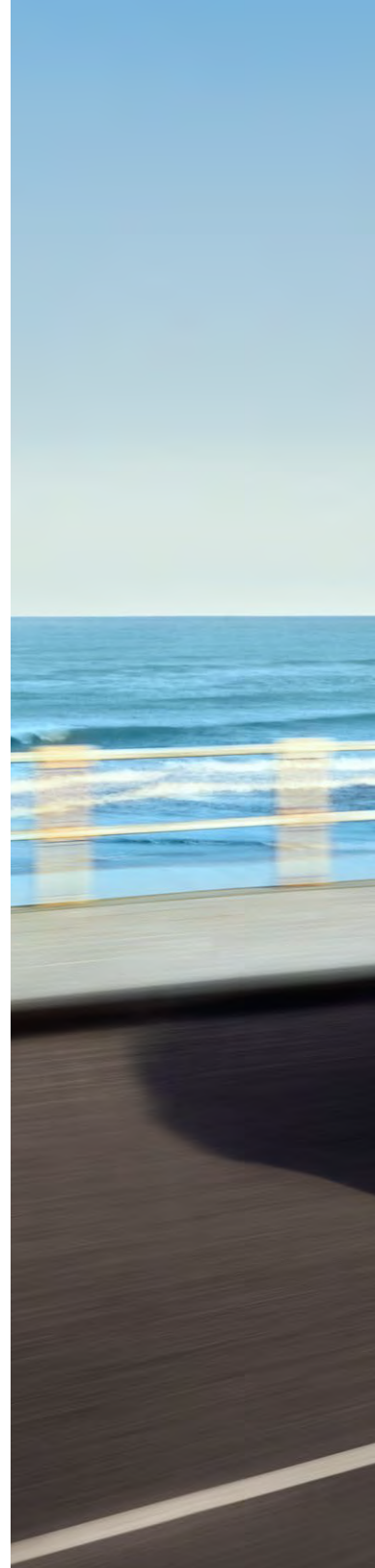
Your lifestyle says you need an SUV; your heart says you want a stylish, driver-focused road car. If this is your dilemma, we've designed our Volvo XC60 as your solution. It's the perfect car for demanding drivers in search of adventure – both in town and beyond the city limits. And now, thanks to a whole range of improvements both inside and outside the car, our dynamic, refined, perfectly proportioned SUV just got even better.

You really have to drive an XC60 to appreciate its superb handling. Thanks to its class-leading chassis and Corner Traction Control, a system that makes cornering even more fun, it doesn't feel like a towering, top-heavy SUV: it's every bit as nimble and agile as a ground-hugging road car. But its ride height gives you a commanding driving position and added confidence when negotiating busy city traffic. And with its generous ground clearance, it'll take you wherever your adventurous spirit leads you.



The best way to enjoy the stiffer chassis and direct steering of our XC60 R-Design is to take a test drive.

FIND YOUR NEAREST DEALER AT  
[VOLVOCARS.COM](http://VOLVOCARS.COM)











# WE SWEDES LIKE TO THINK WE'RE TOO NICE TO JUDGE THINGS ON THEIR LOOKS. WE'RE NOT.

OUR DESIGN VISION

VOLVO XC60 | 7

“I was inspired by a river near my home,” explains the XC60’s exterior design manager Steve Potter. “The water was flowing incredibly fast over the rocks. We set about creating this visual tension and constant movement, which changes depending on your point of view – it’s alive. The result is a very human, organic feel.”

Our new XC60 gets a smarter, more purposeful look that’s as much at home on a city street as a country lane. We’ve refined the design so the car is now all one body colour, which gives our SUV a more urban twist. The new headlamps give the XC60 a focused, determined face with huge road presence, and the intense vertical daytime running lights are positioned far out to the corners of the car to emphasise the XC60’s height and stature.

True to our Scandinavian design principles, we’ve worked on every last element to reduce what our designers call visual “noise”. We care about small details like moving the washer nozzles out of sight and masking anything that might detract from the XC60’s elegant, clean surfaces. And we’ve given the car a new, bigger Iron Mark – Volvo’s iconic badge – which again enhances the car’s self-confident look.

You can order your new XC60 with beautifully crafted integrated tailpipes. They remain perfectly in place, even though the pipe system expands by 25mm as the engine reaches its operating temperature. This is true Scandinavian precision engineering.

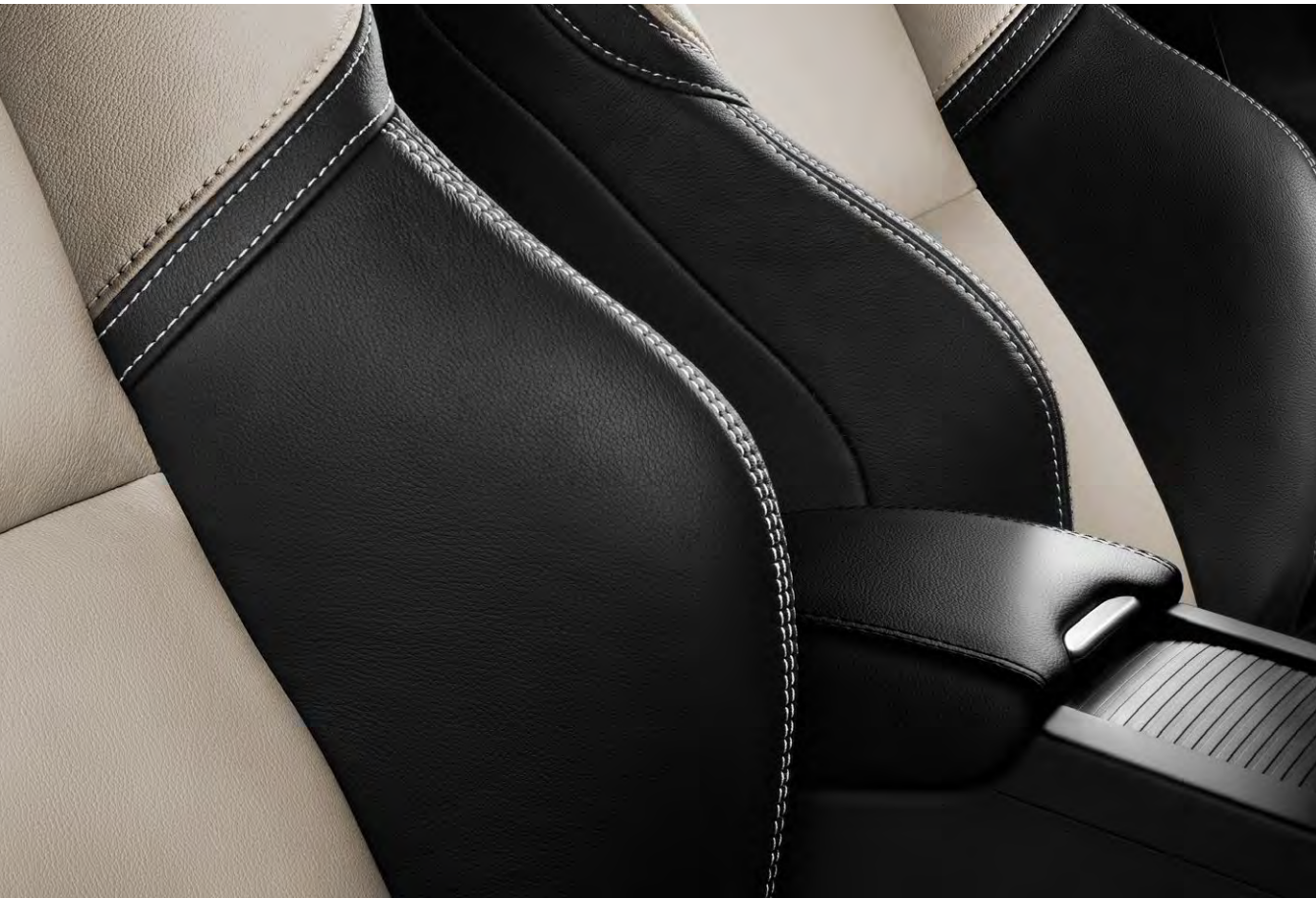
TO SEE MORE OF THE XC60’S COOL DESIGN  
FEATURES, GO TO [VOLVOCARS.COM](http://VOLVOCARS.COM)



SCANDINAVIAN  
INTERIOR DESIGN.  
ON FOUR WHEELS.



If you enjoy driving, order our new gearshift paddles. They offer faster gear changes and by allowing you to keep your hands on the steering wheel, they also ensure you're always 100 per cent in control of your car. In addition to its dynamic handling, the XC60 also has the comfort you expect from a luxury car. "We're famous for our seats," says the XC60's Product Manager, Stefan Sällqvist, "they're something we never compromise on. We're proud of our new Sport seat. It looks fantastic and hugs you and supports you from your thighs to your shoulders. True to Volvo's renowned ergonomic design, you'll be able to drive for hours sitting in them without getting tired."



Our all-new Ambient Light illuminates any features you might need to find at night. A crisp white glow ensures you'll never have to fumble in the dark for cupholders or seat controls, or root around blindly in the luggage areas.

ALL THE BEST PLACES  
ARE TOUGH TO GET TO.  
SEE YOU THERE, THEN.



It's all about how you drive – with the Four-C chassis, you get to choose between three different modes. Comfort and Sport are self-explanatory; Advanced really optimises your car's grip. And you can change between modes at any time at the push of a button.

[READ MORE ON VOLVOCARS.COM](http://VOLVOCARS.COM)



In Sweden we say there's no such thing as bad weather, just the wrong clothes. We think that applies to cars, too. We've always designed our cars to incorporate the latest driving technology so you can go anywhere regardless of what's under your tyres, or what the weather is throwing your way. Think of our cars like a coat – just a very versatile one.

Choose All-Wheel Drive and your XC60 will feel just as natural off-road as it does on your home town's

boulevards. Thanks to its high ground clearance you can negotiate rough terrain with ease. Hill Descent Control boosts that capability even further, making the XC60 a true all-round vehicle that's equally at home in city streets as it is on country lanes.

The overall impression of powerful agility and assurance is testament to our advanced chassis set-ups: we've spent thousands of hours perfecting and tuning them, heightening your responsive, in-command driving experience to a new level.





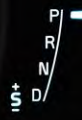
**VOLVO**



22°C

T2 11.9 km

21:12



# VOLVO SENSUS. YOU'RE IN CONTROL, NATURALLY.

## *SENSUS*

YOUR SPACE | 13

Since you'll spend most of your time in the driver's seat of your Volvo, we've designed a gorgeous space around you. All of your controls are as easy to use and intuitive as possible. We call this approach to connecting you and your car with the world around you Volvo Sensus. Our beautiful new Adaptive Digital Display is the latest expression of this philosophy. Not only does it give you all the information you need without overwhelming you with data, it also gives you three modes to choose from – Elegance, Eco and Performance. And with our Volvo Sensus Connect solutions, you can convert the 7-inch screen in your dashboard into an internet-connected infotainment hub, giving you access to TuneIn internet radio with 80,000 stations worldwide. With Volvo On Call, you not only get a WiFi hotspot for all your internet-connected devices – it also

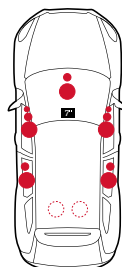
includes an innovative smartphone app that gives you access to a host of remote functions. It's a service that works just as well from inside your home on a cold morning as it does at the airport on the other side of the planet. Whether you want to preheat your car, send an address to your navigation system or check up on your car, Volvo On Call does it all.

Of course, your Volvo's beautiful functionality doesn't end with its displays, screens and apps. We've put the same amount of care into the physical controls, such as our iconic floating centre stack with the trademark 'manikin' climate control buttons. And after dark, our eye-catching illuminated gearshifter for automatic gearboxes adds a touch of atmosphere to your night-drives.

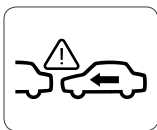
### FULL SONIC IMMERSION

At Volvo, we believe you should enjoy the very best audio experience. That's why we've designed our state-of-the-art Premium Sound Multi Media System with Audyssey Laboratories. Using twelve high-fidelity loudspeakers and MultEQ sound processor technology, this 5x130 W system provides an unparalleled aural experience for every passenger and connects easily with external media players.

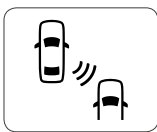
[READ MORE ON VOLVOCARS.COM](http://VOLVOCARS.COM)



Our beautifully designed, high-res colour display allows you to choose between three driving modes – Elegance, Eco and Performance.



In town, City Safety is designed to prevent you from colliding with the car in front if it stops suddenly. This advanced IntelliSafe system works at speeds of up to 50 km/h and senses if you're about to collide with another car, then, if necessary, applies the brakes.



We've further improved our Blind Spot Information System (BLIS). It now uses radar technology to alert you to vehicles closing up in your blind spot. There's also Cross Traffic Alert, which watches out for vehicles you can't see when you're reversing out of tight parking spaces.



Because we care about other road users just as much as you, Pedestrian Detection with Full Auto Brake watches out for people walking into your path and applies the brakes if you're unable to react in time.

[READ MORE ON VOLVOCARS.COM](http://VOLVOCARS.COM)





Can you see our radar? It's hidden away in the XC60's grille but working hard to keep you and people outside the car safe. We call it Collision Warning with Full Auto Brake and Pedestrian Detection – you'll call it a safety breakthrough.

# OH YES. DID WE MENTION SAFETY?

## INTELLISAFE

WE CARE ABOUT YOU | 15

In 1927 our founders, Assar Gabrielsson and Gustaf Larson, decided to make really strong cars that could cope with our rough country roads. But strength alone wasn't enough. They also had a vision: "Cars are driven by people," they said, "so the guiding principle behind everything we make at Volvo is – and must remain – safety." Now our goal is that, by 2020, nobody shall be seriously injured or killed in a new Volvo. We think our founders would have approved.

In order to help us achieve this goal, and in keeping with our philosophy of making your life easier, your XC60 has a whole suite of intuitive safety technologies inside it. They're there to support your daily driving, protecting you in the event of an accident and often preventing collisions in the first place. We call this IntelliSafe.

We know XC60 owners love driving, but in a world of busier and busier roads, you are constantly

exposed to other people's mistakes. That's why IntelliSafe offers some really smart technologies such as City Safety, Collision Warning with Full Auto Brake and Pedestrian Detection as well as Cyclist Detection.

And because you love driving, it's good to know that your XC60 doesn't just protect you – it actively supports you, too. Take Active High Beam. With this technology, your headlights stay on full beam all the time. When another car comes towards you (or you approach another car from behind), the system prevents dazzling the other driver by shading out only as much of your beam as necessary – no more, no less. Our Dynamic Stability and Traction Control (DSTC) is another IntelliSafe technology. If there's a risk of your XC60 losing stability, DSTC applies just the right amount of brake force to one or more wheels and reduces engine power as needed to prevent any skidding. You'll probably never notice a thing. But that's OK, we're just doing our job.



WE THINK SUSTAINABLE  
DRIVING IS EXCITING.  
SO WILL YOU.



## DRIVE-E

YOUR ENGINE CHOICE | 17

Drive-E is at the heart of every Volvo we make. It's our all-encompassing approach to sustainable driving, our innovative thinking behind a whole range of technologies that will give you more efficiency – and lower running costs – without compromising on a pleasurable drive.

The latest expression of our Drive-E philosophy is our range of all-new low-consumption, low-emission Drive-E powertrains. Built to provide efficient power, they consist of all-new lightweight, low-friction engines and all-new gearboxes. For the XC60, the choice ranges from the 2.0-litre turbodiesel D4 with CO<sub>2</sub> emissions of just 117g/km\* to the T6 306hp petrol option. These compact engines are perfectly matched with an all-new, innovative

automatic eight-speed gearbox. Together, engine and gearbox form a drivetrain which delivers a great driving experience and even better efficiency than before. And if you'd like to boost your efficiency even further, our intelligent ECO+ function can reduce fuel consumption by another 5%.

As part of our Drive-E philosophy, we also employ Start/Stop technology and energy recovery systems. Drive-E also means recyclability and more sustainable manufacturing – for example, all of the electricity for our factory in Sweden comes from clean, hydroelectric power. All this makes Drive-E a central part of everything we do.

\*Fuel consumption and CO<sub>2</sub>-emission data apply with manual gearbox and limited selection of wheels and tyres.



ARE YOU  
LOOKING AT ME?  
  
GOOD.

R-DESIGN

VOLVO XC60 | 18

Would you like to enhance the dynamic personality of your XC60 even further? Well then, R-Design is for you, with a range of features to give your Volvo a sporty, unique profile.

But R-Design is so much more than a cosmetic exercise – as with the all best Scandinavian design, form follows function. An R-Design XC60 benefits from a stiffer sport chassis and more direct steering, all of which means you enjoy getting to your adventure even more.



For an exterior with a more individual, dynamic look, R-Design includes truly eye-catching, sporty five-spoke alloy wheels and unique door mirror covers with silk metal finish. At the back, you get a motorsport-style diffuser that gives your XC60 an exciting, sporty look. And R-Design chrome dual exhaust pipes add the perfect finishing touch to your XC60's exterior.

The R-Design story continues in the interior, starting with supportive sport seats in Nubuck leather with embroidered R-Design logos. Also included is an exclusive R-Design steering wheel as well as sport pedals. An illuminated soft-touch gear shifter for automatic gearboxes, our unique blue R-Design digital instrument cluster, personalised interior LED lighting and a striking charcoal headliner all add to the R-Design experience.





# WHICH XC60 ARE YOU?

EXPRESS YOURSELF

VOLVO XC60 | 20

Congratulations, you've chosen a Volvo XC60. You've even picked your preferred engine. Now all you need to do is select the trim level that's right for you. We've made it easy for you by providing four that we think you'll love. Whether you'd like all the trimmings or a sporty look both inside and out, we have the right one for you.

## XC60

Includes:

3-point safety belts on all 5 seats with belt reminder | 40/20/40 split rear seat | Airbag, driver & passenger side | AUX input | Black roof rails | Charcoal decor inlays | City Safety | Corner Traction Control (CTC) | Dual cupholders, front | Dynamic Stability and Traction Control (DSTC) | Electrically operated parking brake | Electronic Climate Control (ECC) with ventilation outlets in B-pillars | Front seat 12V outlet | Hill Descent Control (AWD) | Headlamp level adjuster | Illuminated vanity mirror, passenger side | Inflatable Curtains (IC) | ISOFIX, rear | LED DRL (Day Running Light) | Load cover | Lomma textile upholstery | Outer temperature gauge | Roll-Over Protection System (ROPS) | Roll Stability Control (RSC) | Remote control central locking | Segin 17" aluminium wheels | Sensus infotainment with 5" colour screen in the center stack and Performance audiosystem with CD player | Side impact airbags integrated in the front seats | Trip computer | Tyre sealant kit | Whiplash protection integrated in the front seats (WHIPS)



## + KINETIC

Includes Base equipment level plus the following:

Audio controls in steering wheel | Cruise control | Illuminated vanity mirror, driver side | Leather-clad gear knob | Leather-clad steering wheel | Textile floor mats

## + MOMENTUM

Includes Kinetic equipment level plus the following:

Automatically dimmed inner mirror | Bluetooth® | Bright work side windows, lower | Eriksberg textile/T-Tec upholstery | High Performance audio system | Leather-clad steering wheel with Silk Metal inlay | Metal luggage threshold | Park assist rear | Rain sensor | Retractable rear view mirrors with ground lights | Shimmer Graphite Aluminium decor inlays | Uni decor climate control manikin

## + SUMMUM

Includes Momentum equipment level plus the following:

18" Pan aluminium wheels | Adaptive Digital Display | Chromed lower door mouldings | Leather upholstery | Power driver seat with memory function for seat and side mirrors | Rear armrest with cupholders and storage | Roof rails, bright

## R-DESIGN

Can be added to Kinetic, Momentum, or Summum equipment levels.

3-spoke perforated leather-clad steering wheel with metal R-Design badge | 18" Ixion aluminium wheels | Adaptive Digital Display with R-Design theme | Dual exhaust with visible tailpipes | Inscription Charcoal headliner | LED dayrunning lights (R-Design) | Grille with R-Design emblem | Leather-clad Sport gear knob | Nubuck textile/leather upholstery with front seats embossed with R-Design logo | R-Design interior decor trim inlays | Rear-view mirror caps in silk metal finish | Sport chassis | Sport floor mats | Sport pedals | Sport seats | Stainless steel treadplates with R-Design logo | Unique R-Design front design | Unique R-Design rear diffuser



# YOUR XC60 IS YOUR HOME AWAY FROM HOME. GIVE IT YOUR SIGNATURE.

## PERSONALISE YOUR INTERIOR

Choose an XC60 and you'll enjoy an elegantly designed cabin as standard, with a superior finish in evidence everywhere you look – from the silk metal finish on our air vents to the fine cloth surfaces on the door pillars. Our Comfort seats can be ordered in Lomma textile, Eriksberg T-Tec/textile or leather, while our new Sport seats in leather give you

legendary Volvo comfort while also keeping you firmly in place in those fast corners. Choose our heated three-spoke steering wheel and you can gently warm your hands on cold mornings. There's a brand new easy-to-read Analogue Instrument Cluster or if you prefer, try our new Adaptive Digital Display.





Our Inscription offer consists of a palette of luxurious options, which you can combine in your own way, giving you the opportunity to truly design your car around your own taste. The Inscription Linear Walnut console has a symmetrical V-shaped fishbone pattern where the grain meets in the middle. It's this level of design detail that gives the Inscription

range its sophistication. Other touches include our Inscription Leather Instrument panel and our stunning Inscription Charcoal headliner in the roof interior.



We upholster our Inscription seats with the finest soft leather by luxury leather specialists Bridge of Weir. Minimal surface treatment means the leather is wonderfully soft and durable.

UPHOLSTERIES – INSCRIPTION SOFT LEATHER



Inscription Soft Leather, GF60  
Offblack in Anthracite Black interior with Inscription Charcoal headlining



Inscription Soft Leather, GF6J,  
Toscana Tan in Anthracite Black  
interior with Inscription Charcoal  
headlining



Inscription Soft Leather, GF6S,  
Marble White in Anthracite Black  
interior with Inscription Charcoal  
headlining



Inscription Soft Leather, GF1B,  
Soft Beige in Sandstone Beige  
interior with Soft Beige headlining



Inscription Soft Leather, GF1V,  
Marble White in Sandstone Beige  
interior with Soft Beige headlining

UPHOLSTERIES – SPORT LEATHER



Sport Leather, G361  
Offblack in Anthracite Black interior with Inscription Charcoal headlining



Sport Leather, G301  
Offblack in Anthracite Black interior  
with Quartz headlining



Sport Leather, G36M  
Hazel Brown/Offblack in Anthracite  
Black interior with Inscription  
Charcoal headlining



Sport Leather, G30M  
Hazel Brown/Offblack in Anthracite  
Black interior with Quartz  
headlining



Sport Leather, G36G  
Blond/Offblack in Anthracite Black  
interior with Inscription Charcoal  
headlining



Sport Leather, G30G  
Blond/Offblack in Anthracite Black  
interior with Quartz headlining



Sport Leather, G36B  
Soft Beige in Anthracite Black  
interior with Inscription Charcoal  
headlining

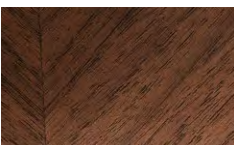


Sport Leather, G30B  
Soft Beige in Anthracite Black  
interior with Soft Beige headlining

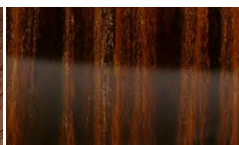


Sport Leather, G312  
Soft Beige in Sandstone Beige  
interior with Soft Beige headlining

INLAYS



Inscription Linear Walnut



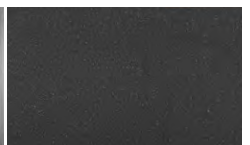
Urbane Wood



Copper Dawn



Shimmer Graphite  
aluminium



Charcoal



Leather, G701  
Offblack in Anthracite Black interior with Quartz headlining



Leather, G761  
Offblack in Anthracite Black interior with Inscription Charcoal headlining



Leather, G70B  
Soft Beige in Anthracite Black interior with Soft Beige headlining



Leather, G76B  
Soft Beige in Anthracite Black interior with Inscription Charcoal headlining



Leather, G71B  
Soft Beige in Sandstone Beige interior with Soft Beige headlining

UPHOLSTERIES – ERIKSBERG T-TEC/TEXTILE



Eriksberg T-Tec/textile, G601  
Charcoal/Offblack in Anthracite Black interior with Quartz headlining



Eriksberg T-Tec/textile, G661  
Charcoal/Offblack in Anthracite Black interior with Inscription Charcoal headlining



Eriksberg T-Tec/textile, G61B  
Soft Beige in Sandstone Beige interior with Soft Beige headlining

UPHOLSTERY – LOMMA TEXTILE



Lomma Textile, G001  
Charcoal in Anthracite Black interior with Quartz headlining



Titania, 8x20", Diamond Cut/Glossy Black



Inscription Avior, 8x20"  
Silver Bright



Candor, 8x20"  
Diamond Cut/Matte Black



Candor, 8x20"  
Diamond Cut/Matte Iron Stone



Talitha, 8x20"  
Diamond Cut/Matte Silver Stone



Talitha, 8x20"  
Diamond Cut/Matte Dark Grey



Talitha, 8x20"  
Diamond Cut/Glossy Black



Fenrir, 8x19"  
Black Chrome



Freja, 8x18"  
Diamond Cut/Matte Dark Grey



Freja, 8x18"  
Diamond Cut/Light Light Grey



Merac, 7.5x18"  
Glossy Black



Pan, 7.5x18"  
Silver Bright



Zephyrus, 7.5x18"  
Diamond Cut/Matte Tech Black



Valder, 7.5x17"  
Diamond Cut/Titanium Grey



Valder, 7.5x17"  
Silver



Segin, 7.5x17"  
Silver



# MATCH YOUR XC60 TO YOUR LIFE.

ACCESSORIES

VOLVO XC60 | 28

The most pleasurable part of buying a new Volvo is putting your personal stamp on it. You can do that by choosing accessories that reflect your own taste and that cater to your particular lifestyle. If, for example, you take long driving holidays with family on board you'll love our Rear Seat Entertainment system. Since it has two 8-inch touch screens and DVD players, and is compatible with mp3-players and SD cards, it might be one of the best investments you make this year.

FIND MORE ACCESSORIES ON [VOLVOCARS.COM](http://VOLVOCARS.COM)

#### YOUR CAR, YOUR STYLE

To give your XC60 a more unique profile, we've developed Exterior Styling Accessories that reinforce your car's dynamic stance. They're available in Matte Silver or Matte Iron Stone.



#### MAKE A BOLD STATEMENT

Choose a rugged rear skid plate, neatly faired-in exhaust pipes, a front skid plate or integrated running boards. These imposing 20" Candor wheels pictured here are available in Diamond Cut/Matte Black or Diamond Cut/Matte Iron Stone.

#### PARK ASSIST CAMERA, FRONT BLIND VIEW

There is nothing more challenging than trying to negotiate tight exits and junctions, which often have restricted visibility. We aim to make that easier for you with our Parking Assistance Camera, Front Blind View, which allows you to 'see around corners' with a 180° field of vision.



THE MOST  
CAREFREE WAY TO  
OWN A CAR. EVER.





We love it when you're happy. When things are easier than you expect, or go faster and become better. Because when you buy a Volvo, you buy into the easiest way to own a car. Financing, insurance, servicing, changing tyres, cleaning – those aspects of ownership that you might not find very interesting, are exactly the ones that we love to make easier and better for you. That's why your Volvo dealer will always offer you a whole range of services all designed around you, delivering you the most carefree ownership experience possible.

#### BUYING & OWNING

- Warranties
- Financing
- Leasing
- Insurance
- Service Contract
- My Volvo website

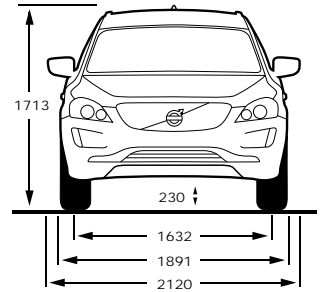
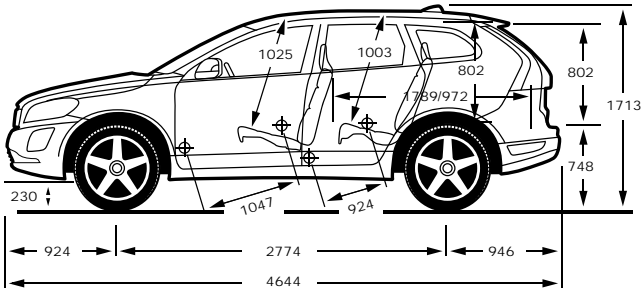
#### SERVICE & MAINTENANCE

- Volvo Service 2.0
- Software updates
- Personal Service Contact
- Rental cars
- Volvo Professional Car Care
- Tyre services

#### IF SOMETHING HAPPENS

- Volvo Assistance
- Repairs
- Volvo Glass Services
- Volvo Dent Repair
- Car Climate Services

FIND OUT MORE AT [VOLVOCARS.COM](https://www.volvocars.com)

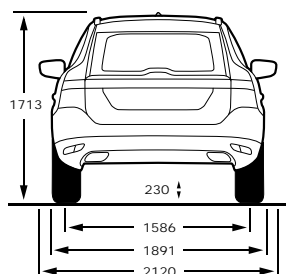
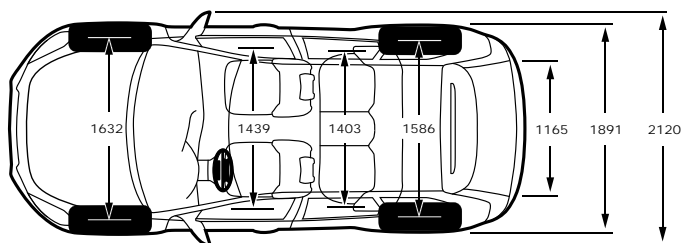


	T6 AWD	T6
Engine type:	3.0L I6 petrol twin-scroll turbo	2.0L I4 petrol supercharged/turbo
Transmission:	Six-speed Geartronic	Eight-speed Geartronic
Fuel consumption, litres/100 km, mixed cycle, man/auto:	-/10.7	-/7.3
CO <sub>2</sub> g/km, man/auto:	-/249	-/169
Max. power output, kW (hp) at rpm:	224 (304) 5600	225 (306) 5700
Max. torque, Nm at rpm:	440/2100-4200	400/2100-4500
Acceleration, 0-100 km/h in sec, man/auto:	-/6.9	-/6.9
Top speed, km/h, man/auto:	-/210	-/210
Fuel tank, litres:	70	70
Environmental classification:	Euro 5 (2011)	Euro 6

	T5
Engine type:	2.0L I4 petrol turbo
Transmission:	Eight-speed Geartronic
Fuel consumption, litres/100 km, mixed cycle, man/auto:	-/6.7
CO <sub>2</sub> g/km, man/auto:	-/157
Max. power output, kW (hp) at rpm:	180 (245) 5500
Max. torque, Nm at rpm:	350/1500-4800
Acceleration, 0-100 km/h in sec, man/auto:	-/7.2
Top speed, km/h, man/auto:	-/210
Fuel tank, litres:	70
Environmental classification:	Euro 6



FIND OUT MORE ON  
VOLVOCARS.COM



	D5 AWD	D4 AWD
Engine type:	2.4L I5 common-rail twin-turbodiesel	2.4L I5 common-rail twin-turbodiesel
Transmission:	Six-speed manual or Six-speed Geartronic	Six-speed manual or Six-speed Geartronic
Fuel consumption, litres/100 km, mixed cycle, man/auto:	5.3/6.4	5.3/6.4
CO <sub>2</sub> g/km, man/auto:	139/169	139/169
Max. power output, kW (hp) at rpm:	158 (215) 4000	133 (181) 4000
Max. torque, Nm at rpm:	420 (440 auto)/1500–3250 (3000 auto)	420/1500–2500
Acceleration, 0–100 km/h in sec, man/auto:	8.1/8.3	9.8/10.2
Top speed, km/h, man/auto:	210/205	200/195
Fuel tank, litres:	70	70
Environmental classification:	Euro 5 (2011)	Euro 5 (2011)

	D4	D3
Engine type:	2.0L I4 common-rail turbodiesel	2.0L I5 common-rail turbodiesel
Transmission:	Six-speed manual or Eight-speed Geartronic	Six-speed manual or Six-speed Geartronic
Fuel consumption, litres/100 km, mixed cycle, man/auto:	4.5/4.7	5.3/6.0
CO <sub>2</sub> g/km, man/auto:	117/124	139/159
Max. power output, kW (hp) at rpm:	133 (181) 4250	100 (136) 3500
Max. torque, Nm at rpm:	400/1750–2500	350/1500–2250
Acceleration, 0–100 km/h in sec, man/auto:	8.5/8.5	11.2/11.2
Top speed, km/h, man/auto:	210/210	190/185
Fuel tank, litres:	70	70
Environmental classification:	Euro 6	Euro 5 (2011)

**NB.** The engine programme may vary from country to country. All technical data may be subject to change. Please ask your Volvo dealer for further information.

Upgrade your XC60's performance with a Polestar Performance software. Polestar are our racing partners. We've been using their expertise on the track to help us continually improve our engines' efficiency and performance.

[FIND OUT MORE ON POLESTAR.COM](http://FIND_OUT_MORE_ON_POLESTAR.COM)

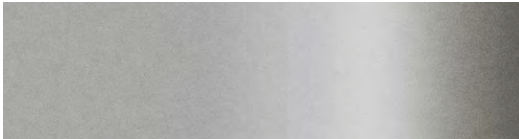
**Please note:** Some of the information in this brochure may be incorrect due to changes in product specifications that may have occurred since printing. Some of the equipment described or shown may now only be available at extra cost. Before ordering, please ask your Volvo dealer for the latest information. The manufacturer reserves the right to make changes at any time and without notice to prices, colours, materials, specifications and models.



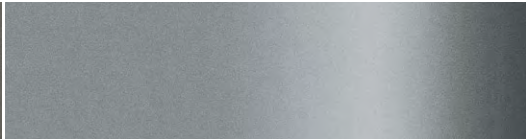
707 Inscription Crystal White Pearl  
(Also available for R-Design)



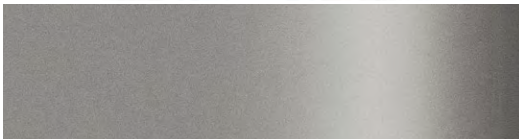
614 Ice White  
(Also available for R-Design)



711 Bright Silver metallic



477 Inscription Electric Silver metallic  
(Also available for R-Design)



484 Seashell metallic



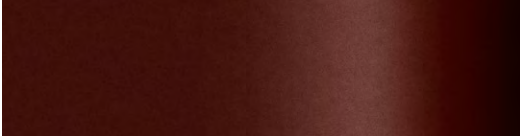
498 Caspian Blue metallic



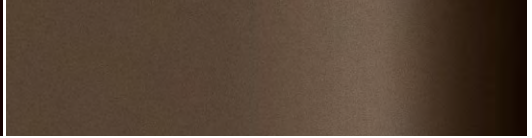
612 Passion Red  
(Only available for R-Design)



702 Flamenco Red metallic



712 Rich Java metallic  
(Also available for R-Design)



700 Twilight Bronze metallic



492 Savile Grey metallic  
(Also available for R-Design)



452 Black Sapphire metallic  
(Also available for R-Design)



019 Black Stone

**Please note:** It's not possible to reproduce exact original shades in printed matter. Please ask your dealer to show you samples.



VOLVO XC60